

# Platform



2019 Issue 5

**Green light for  
Falling Sands  
restoration p2**

**The impact of  
your donations  
at the SVR p4**



**Restoration  
updates p7,  
p10, p11**

**Journey  
through time  
exhibition p15**

[svrtrust.org.uk](http://svrtrust.org.uk)

Registered Charity No 1092723

# ‘Helping hands for Falling Sands’ secure the SVR’s future viability

**It’s now ‘all systems go’ with our ambitious project to save the SVR’s viaduct at Falling Sands. We’ve had a truly momentous year of fundraising; not only did we receive £397,000 in donations from generous individuals, companies, community group, trusts and grant-making organisations, but we also won £853,000 of funding from The National Lottery Heritage Fund for the Falling Sands project.**

The restoration work itself will start early in 2020 (see details below) but we’re already putting in place the wide-ranging programme of exhibitions and activities that forms an important part of the Falling Sands project.

We’ll be working with primary schools, fashion students, volunteers and community groups to research and create a stunning range of exhibitions, events, costumes and oral recordings.

## How will the SVR carry out the viaduct’s restoration?

After the 2019 Christmas and New Year season, work will start in early January 2020 to remove the track, ballast and sandstone infill from the viaduct.

Contractors will install efficient drainage channels and add a modern, waterproof membrane, before putting everything back together. We’ll be making the most of our annual winter shutdown period and will also need

Together these will reveal the rich social history that surrounds the SVR from its earliest Victorian days.

In 2020, look out for our mobile exhibition in a specially adapted brake van, mirrored by a larger exhibition at The Engine House, Highley. There’ll be exciting, interactive exhibits, bringing to life what it was like to build, work at and travel on the Severn Valley line from the 1850s onwards.

to keep the line closed between Kidderminster and Bewdley until this part of the work finishes. We expect the full line to be open in time for Easter 2020.

As soon as the structure has dried out, damaged bricks will be replaced, and the mortar repointed. We’ll use rope access for this part of the project, so train services won’t be affected. It should be complete by autumn 2020.

## ‘Helping hands for Falling Sands’ donation wall

Thousands of people, companies, community organisations and grant making bodies signed up as ‘helping hands for Falling Sands’ and we recognise their support on a stunning 40-metre-long installation\* at The

Engine House, Highley. Visible from passing trains, our donation wall is a testament to their determination to save Falling Sands Viaduct.

*\*due for installation summer 2020*





# It's all about you!

Regular and single donations to the SVR Charitable Trust from people like you have helped all these projects – we couldn't do any of it without you!



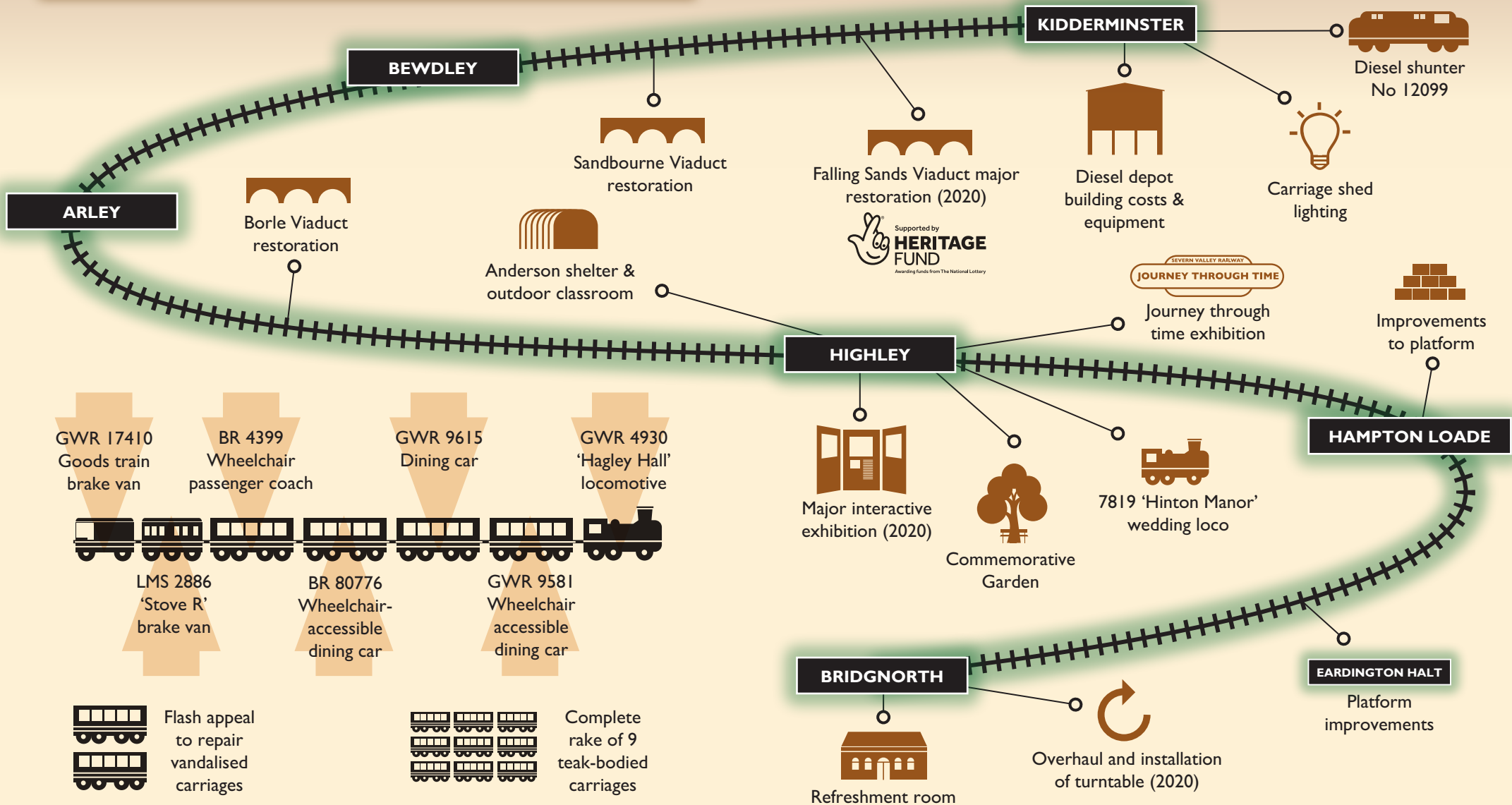
Apprentice Training since 2013



Annual track re-laying



Endowment fund



## Why do we need the SVR Charitable Trust?

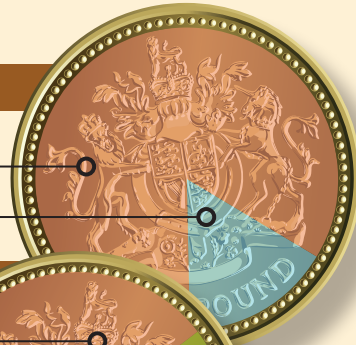
Ticket sales and profits from the SVR's shops, cafes and bars cover the day-to-day running costs of the Railway, but so much more is needed to restore rolling stock and infrastructure and train young heritage engineers. The Charitable Trust was created in 2012 to do all these things, thereby safeguarding the long-term future and operational viability of the SVR.



## Did you know?

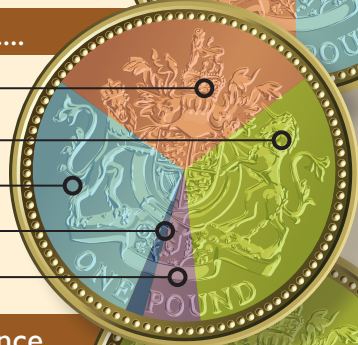
For every £1 you donate, we spend....

On restoration, training and investment for the future **84p**  
 On raising more funds **16p**



This is how we receive our income....

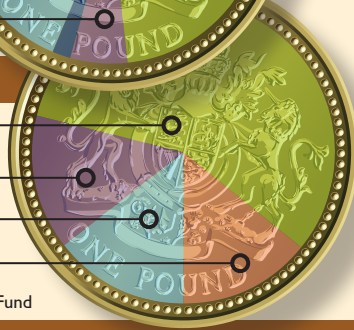
Donations **30%**  
 Legacies **34%**  
 Major gifts, trusts and corporates **29%**  
 Investments **2%**  
 Events **6%**



Here's how you're making a difference....

\* Endowment fund **57%**  
 Rolling stock restoration **13%**  
 Apprentice training **14%**  
 Infrastructure restoration **15%**

\* This includes a substantial boost from The National Lottery Heritage Fund

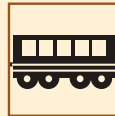


It costs....

**£1,000,000**  
to restore a loco



**£80,000**  
to restore a carriage



**£17,000**  
to support training each apprentice for one year



**£120,000**  
to re-lay half a mile of track



svrtrust.org.uk • 01562 757940 • fundraising@svrtrust.org.uk



## 'Access for All' at the SVR

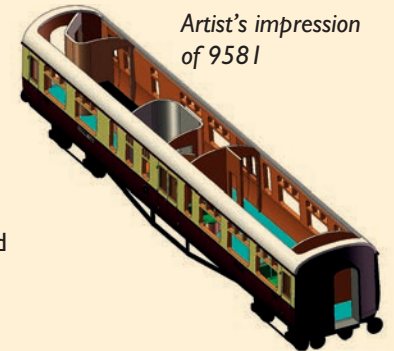
80776's  
restoration team

### Wheelchair users can dine in style

As the result of a Charitable Trust-funded project, the SVR now boasts its very own wheelchair-accessible dining car, and we believe it's the only one of its type to exist on a heritage railway. The tables in BR Mark I 80776 are designed with a unique zigzag arrangement, to allow maximum seating flexibility for wheelchair users and their companions. Freestanding chairs are beautifully upholstered in 1950s style moquette. Regular gifts from our donors, small grants and substantial Department for Transport funding made this project possible, which also includes the restoration of BR Mark I 4399 to complete the SVR's fleet of wheelchair-accessible carriages.

### A splendid buffet car restoration will complete the GWR set

Volunteers from the LNER Carriage Group are working hard at Bewdley to create a buffet car in 1930s style to complete our second set of Great Western Railway carriages dating from the 1920s to 1940s. This coach will come with a specially designed low-level counter that will be ideal for wheelchair users. 9581 is an ongoing project and urgently needs more funding.



Artist's impression  
of 9581

With your help, the SVR can lead the way in providing 'Access for All'. A regular gift, from just £10 a month, will help us give wheelchair users a full heritage rail experience. Please use the form on p9 or sign up online at [svrtrust.org.uk](http://svrtrust.org.uk)

svrtrust.org.uk • 01562 757940 • fundraising@svrtrust.org.uk

## You can make a big impact with an affordable regular gift

£10 probably doesn't feel like a heavy hit to your bank balance, but by donating every month to the Charitable Trust, you'll be building up to the more significant amount of £120 in a year. Next, factor in the Gift Aid that we can claim at no extra cost to you if you're a taxpayer, and the amount transforms into £150.

When you put together your contribution with those of the Charitable Trust's hundreds of other regular givers, you can quickly appreciate what a valuable pot of funding you're helping to create. We can use this pot to support projects right across the Railway, from rolling stock restorations, to infrastructure improvements, from track repairs to training apprentice engineers.

As a regular giver, you become a member of our Patrons' Club. You'll receive a special silver badge

to acknowledge your commitment, along with invitations to special thank you events at the Railway. At Open House in April, we welcomed more than 150 of our Patrons on board the luxuriously appointed Observation Saloon at Kidderminster, to enjoy a cup of tea and the chance to chat with Trustees and members of our team.

**Please use the form opposite, or sign up online at [svrtrust.org.uk](http://svrtrust.org.uk)**



[svrtrust.org.uk](http://svrtrust.org.uk) • 01562 757940 • [fundraising@svrtrust.org.uk](mailto:fundraising@svrtrust.org.uk)



## Why does regular giving make such a difference?



**You can support projects across the SVR – rolling stock, infrastructure and apprentice training - now and in the future**

Helping us to plan ahead to meet the Railway's needs.

Once it's set up, there's nothing else to do, and as a Patron, you'll be invited to special thank you events and behind-the-scenes tours.

**Give a little every month - make a big difference**

**Please sign up online at [svrtrust.org.uk](http://svrtrust.org.uk) or use the form below**

Name:  Tel:   
 Address:   
 Postcode:  Email:  Signature:

**Please complete the details below and return the form to: Number One Comberton Place, Kidderminster DY10 1QR**

To (your bank):  Sort Code:   
 Address:   
 Postcode:  Please debit my account No:   
 Start date:  Signature:   
 Please pay monthly until further notice: £10  £20  £50  Other £

To the SVR Charitable Trust at: **HSBC Bank PLC, Account No: 91525786, Sort Code: 40-26-08**

**Charity Gift Aid Declaration** *giftaid it*  Yes I want to Gift Aid my donation of £  and any donations I make in the future or have made in the past four years. I am a UK taxpayer and understand that if I pay less Income Tax and/or Capital Gains Tax than the amount of Gift Aid claimed on all my donations in that tax year it is my responsibility to pay any difference.

Boost your donation by 25p of Gift Aid for every £1 you donate. Gift Aid is reclaimed by the charity from the tax you pay for the current tax year.

Your address is needed to identify you as a current UK taxpayer. In order to Gift Aid your donation you must tick the box opposite:

**IMPORTANT INFO** Please may we update you from time to time on the SVR and its appeals? Your details are safe with us, and we will never share them with anyone outside the SVR family. The other two members of the SVR family are Severn Valley Railway (Holdings) plc, and the Severn Valley Railway Company Ltd. You can change your mind at any time about how we contact you.

I happy for you to contact me by:  post  email  telephone

# Hagley Hall on track to steam again in 2020

We're looking forward to the SVR's flagship locomotive, 4930 Hagley Hall, returning to steam in 2020, despite a series of setbacks and a significant increase to the project costs.

The original overhaul budget estimate was around £400,000 but we now forecast it will exceed £1 million. A number of components, such as the cylinder blocks, required bespoke fabrication when it transpired they were beyond repair. Many parts required extensive tooling, and although an individual part's material cost may only be hundreds of pounds, the bespoke tooling needed to create it can easily run into thousands of pounds.



Apprentice Jacob Cox applying protective layers of paint to the loco's components

Our fundraising for Hagley Hall is still in full swing. This season, proceeds from both the Kidderminster Tap to Give™ donation point (see p14) and our on-train cash donation envelopes will help boost the pot, and we welcome online donations at [svrtrust.org.uk](http://svrtrust.org.uk). With your donations and funding from The National Lottery Heritage Fund, the Charitable Trust will have provided more than 50% of Hagley Hall's restoration costs.

During the restoration project, SVR volunteers and paid staff will have put in almost 30,000 hours of hands-on work to ensure the impressive Hagley Hall can take its place as the Railway's flagship locomotive.



[svrtrust.org.uk](http://svrtrust.org.uk) • 01562 757940 • [fundraising@svrtrust.org.uk](mailto:fundraising@svrtrust.org.uk)

# Pioneer boot prints uncovered during Borle Viaduct repairs

The Charitable Trust has funded the majority of the essential repairs to Borle Viaduct between Arley and Highley. Around £100,000 of improvements were needed to put right the extensive erosion caused by the freeze/thaw action of water penetration.



A curious discovery was made during the project - boot prints that had been left behind in the concrete by 1970s pioneer preservationists. Covered up for more than 40 years, they only came to light as tonnes of ballast and fill material were removed to install new drainage and carry out improvements to the viaduct's structure. So far, no one has laid claim to any of the prints!

Kidderminster yard serves both the carriage shed and the diesel depot, and its track and turnouts (points) were laid many years ago using recycled components. Having seen more traffic movements than anywhere else on the Railway, it was all thoroughly worn out, and well overdue an upgrade.

The Charitable Trust was able to fund this work, most of which took place during the winter shutdown period at the beginning of 2019. Our photo shows members of the permanent way team taking a short, but well-deserved breather during the heavy work of replacing the ballast.

# A 'makeover' for the SVR's most heavily used track and points



[svrtrust.org.uk](http://svrtrust.org.uk) • 01562 757940 • [fundraising@svrtrust.org.uk](mailto:fundraising@svrtrust.org.uk)



## Gifts in Wills are vital to the SVR's future

Legacies play a huge role in supporting the SVR's long-term future. They make up 34% of the Charitable Trust's income, and it's clear that this form of giving means a great deal to people who care about the Severn Valley Railway.



Margaret Flint spent her working life as an Army nurse, then laboratory research technician, before retiring to care for her husband John,

who died in 2017. She explains why she has chosen to leave a gift in her Will to the SVR:

"I love seeing families at the Railway. Although I never had children myself, it's important to me to know that the SVR will be there for young people in the future. Once I saw an elderly gent holding up his baby grandchild for a photo in front of one of the locos. The sheer delight on his face, and the

connection between the generations, has stayed with me ever since. I'm happy to know that by leaving a legacy I'm doing my bit to keep the Railway going."

Gifts in Wills come in all sizes, and each one helps to secure the SVR's future. For more information, please contact Lesley Carr on 01562 757915 or visit our website [svrtrust.org.uk](http://svrtrust.org.uk).

*When you tell us you intend to leave a gift in your Will, you become a member of our Guardians' Club and you'll receive invitations to special thank you events at the SVR.*

## A special place to remember loved ones

The Charitable Trust's commemorative garden is now in place at Highley and will open to all Engine House visitors in summer 2019. It's a simple and peaceful spot, where people can remember those who've passed away, and reflect on their close connection with the SVR. The garden is close to the track, with superb views of passing trains, and a real connection with the Railway that will have played such a central role in the lives of many people.

Huge thanks to all the volunteers, who have given their time to help create this wonderful space, especially the permanent way team who constructed the raised beds from reclaimed railway sleepers. Generous donations from individuals have enabled us to build the commemorative garden, and we are very grateful for this support. Thanks also to B&Q Kidderminster who donated the plants.



## Making a donation in memory of a loved one

Many people choose to ask for donations in lieu of flowers at the funeral of a loved one, and these are welcomed by the Charitable Trust. We will acknowledge gifts of £500 and more by adding your loved one's name to our scrolls of honour inside The Engine House, Highley. We are planning a special indoor commemorative area on the balcony of The Engine House, where we will display the scrolls. We will also acknowledge those who have left us a legacy in their Will.

# Tap to Give™ at Kidderminster station

At Kidderminster station, it's now amazingly easy to donate to the Charitable Trust and help get 4930 Hagley Hall back in steam – all you need is a contactless credit or debit card.

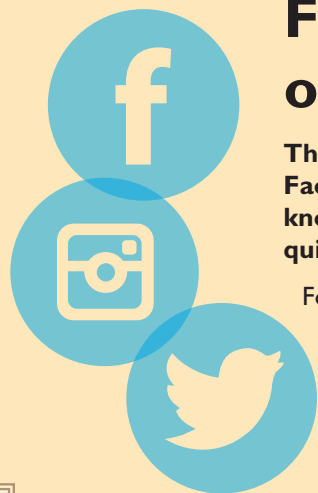
Just Tap to Give™ £3 (or more if you choose) on the concourse, just before the doors into the ticket office. As they say, every little helps! We're trialling Tap to Give™ at Kidderminster this year, and if it proves popular, we'll roll it out to other parts of the SVR.



## Follow the SVR on social media

The Railway enjoys a large following on Facebook, Twitter and Instagram, and we know that we can reach a lot of people quickly and effectively using these platforms.

For example, social media played an important part in our 'helping hands for Falling Sands' appeal (see p2 for more on this.) So if you'd like regular news and insights into everything SVR-related, make sure you follow us on your social media platform of choice.



[svrtrust.org.uk](http://svrtrust.org.uk) • 01562 757940 • [fundraising@svrtrust.org.uk](mailto:fundraising@svrtrust.org.uk)

## Come with us on a 'Journey through Time'

Don't miss this new exhibition at The Engine House, Highley. Funded and developed by the SVR Charitable Trust, it charts the history and development of the line, starting with the growing need for transport during the Industrial Revolution.

The exhibition includes many fascinating archive photographs and articles recovered from the British Newspaper Archive. It's the first exhibition at the Railway that's covered the pre-preservation history of the SVR, and it heralds an innovative programme of new interpretation that's planned over the coming year, including a major new Engine House exhibition in 2020 as part of the Falling Sands restoration project.



## Charitable Trust funding for education at the SVR

Improving education facilities at the SVR is another way in which we're helping the Railway, and we were delighted to secure funding from the Postcode Local Trust, a grant-giving charity that's funded entirely by players of People's Postcode Lottery.

The £10,000 grant has paid for a covered outdoor seating area and an enlarged Anderson shelter. Each year, nearly 10,000 children visit the SVR to take part in various educational programmes for schools.



[svrtrust.org.uk](http://svrtrust.org.uk) • 01562 757940 • [fundraising@svrtrust.org.uk](mailto:fundraising@svrtrust.org.uk)



# What's happening in the SVR's pioneering Heritage Skills Training Academy?

The Railway is now reaping the rewards of its significant investment in apprentice training. Four apprentices have already taken up full-time positions as improver fitter machinists or boilermiths after spending four years within the scheme, and another will graduate this summer.

Two apprentices who followed a shorter two-year programme will have also successfully gained employment with us, and another two existing employees have also benefitted from apprenticeship programmes. All are now making invaluable contributions to maintaining and restoring the SVR's rolling stock or signalling maintenance. We also have administrative apprentices in finance and human resources.

Two new recruits came into the Academy in 2018, and three more will join in August 2019. We need to raise £100,000 every year to keep the Academy running. Would you consider pledging a monthly gift of £10, as an investment in heritage engineer training at the Railway? Please use the form on p9 or sign up online at [svrtrust.org.uk](http://svrtrust.org.uk).



*"Heritage railway isn't just about harking back to the past, we're doing innovative things here too, finding new solutions to keep our stock running."*

George Brogan,  
carriage & wagon  
apprentice



*"There really aren't many people who work as heritage signal maintenance technicians. In fact, I'm told I am the only such apprentice in the country."*

Bradley Windridge,  
signalling maintenance  
apprentice

